

Series 7C7 Compressor Package

SEE VICTAULIC PUBLICATION 10.01 FOR DETAILS

SERIES 7C7

For FireLock NXT™ Series 768 Dry Valves, Series 769 Deluge and Preaction Valves, Series 764 Alternate Valves



SERIES 7C7

PRODUCT DESCRIPTION

The Series 7C7 Compressor package consists of a riser-mounted compressor, Series 757P Air Maintenance Device and flexible hoses for installation. It is designed to ensure the valve system can achieve operational air pressure within 30 minutes of discharge, in accordance with NFPA 13 requirements (7.2.6.2.2).

The Series 757P Air Maintenance is UL Listed and FM Approved.

The package is available with a 1/6HP compressor for an up to 400 gallon system, a 1/3HP compressor for an up to 750 gallon system, or a 220V 50/60 HZ options for 1.5m³ systems. The motor is CE compliant.

NOTE: The 7C7 Air Maintenance/Compressor Assembly is not intended to be used on a Series 768 or Series 769 FireLock NXT valve installed with a Series 746 or Series 746-LPA Dry Accelerator, unless a tank and air regulator are added.

JOB/OWNER

System No. _____

Location _____

CONTRACTOR

Submitted By _____

Date _____

ENGINEER

Spec Sect _____ Para _____

Approved _____

Date _____

www.victaulic.com

VICTAULIC IS A REGISTERED TRADEMARK OF VICTAULIC COMPANY. © 2008 VICTAULIC COMPANY. ALL RIGHTS RESERVED.

REV_D

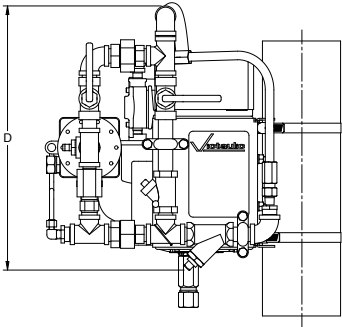
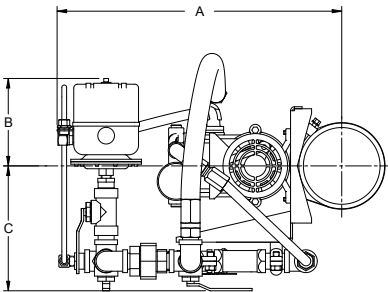
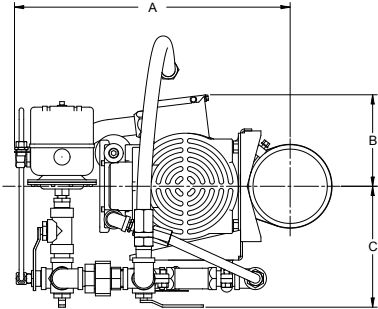


30.22_1

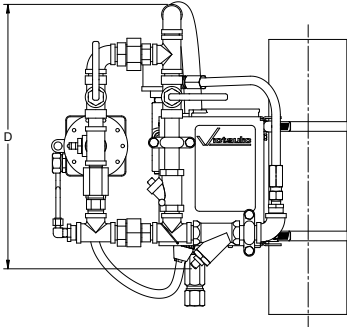
Series 7C7 Compressor Package

SERIES 7C7

DIMENSIONS



SUB 30-22 (1-3)



SUB 30-22 (1-6)

7C7-1-3				
	A	B	C	D
1 ½"	13.59	5.00	6.55	15.38
2"	13.84	5.00	6.55	15.38
2 ½" & 76.1	14.10	5.00	6.55	15.38
3"	14.42	5.00	6.55	15.38
4"	14.94	5.00	6.55	15.38
6" & 165.5	16.04	5.00	6.55	15.38
8"	17.08	5.00	6.55	15.38

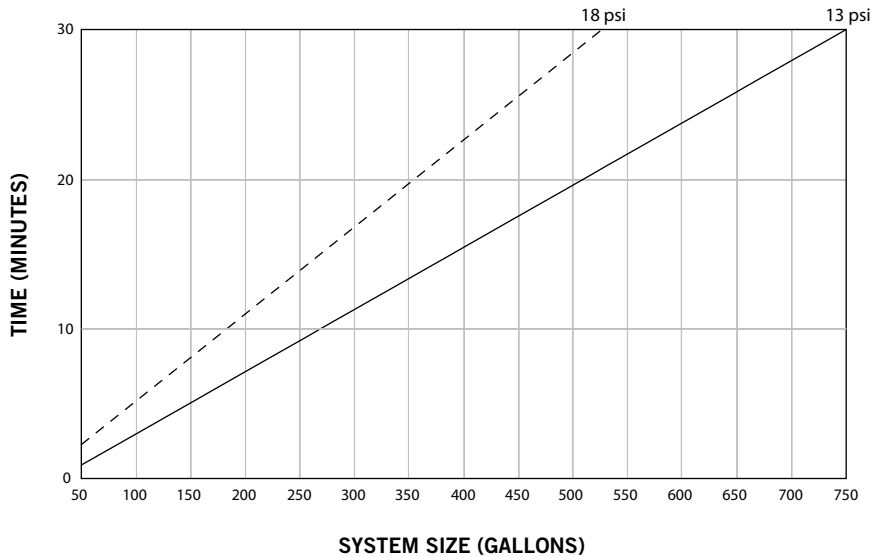
7C7-1-6				
	A	B	C	D
1 ½"	13.59	4.60	6.55	15.38
2"	13.84	4.60	6.55	15.38
2 ½" & 76.1	14.10	4.60	6.55	15.38
3"	14.42	4.60	6.55	15.38
4"	14.94	4.60	6.55	15.38
6" & 165.5	16.04	4.60	6.55	15.38
8"	17.08	4.60	6.55	15.38

Series 7C7 Compressor Package

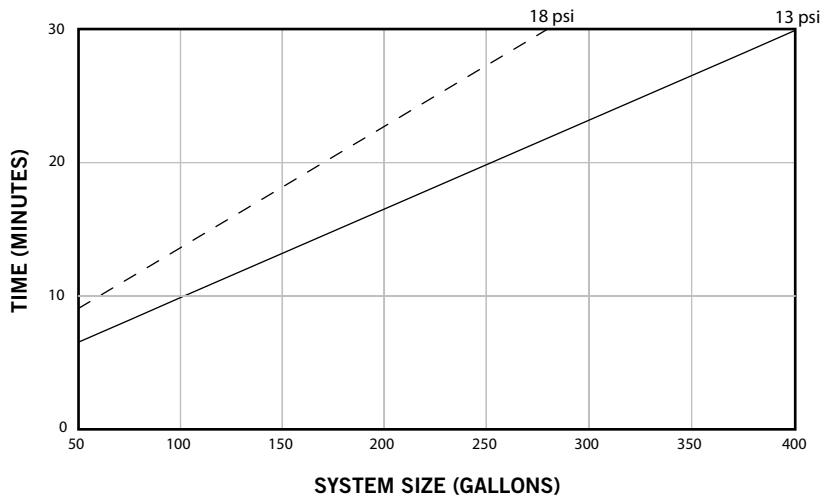
SERIES 7C7

PERFORMANCE

ESTIMATED TIME TO REACH VARIOUS PRESSURES – SERIES 7C7 WITH 1/3-HP COMPRESSOR



ESTIMATED TIME TO REACH VARIOUS PRESSURES – SERIES 7C7 WITH 1/6-HP COMPRESSOR



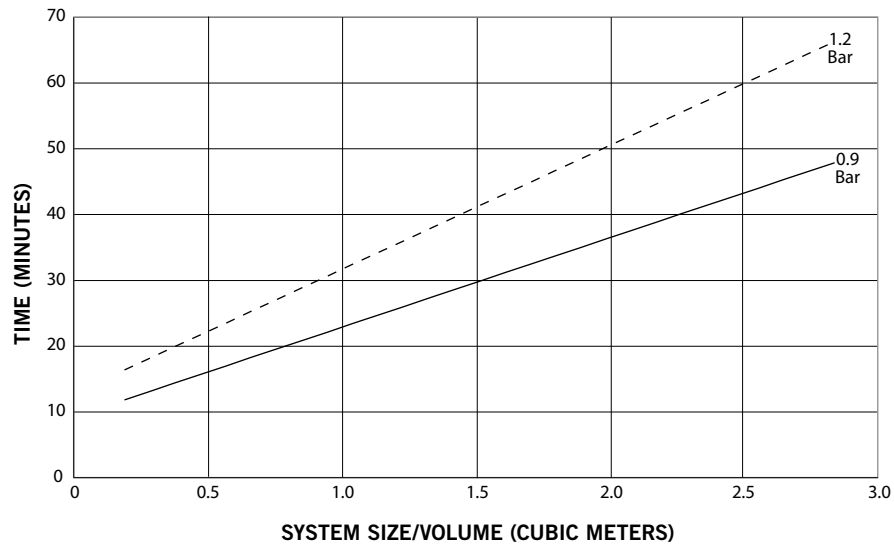
NOTE: In cases where a 776-LPA, 798, or 767 are used, pulling up on the Auto-Vent(s) will speed up system pressurization; gas leakage through the Auto-Vent may slow system fill.

Series 7C7 Compressor
Package

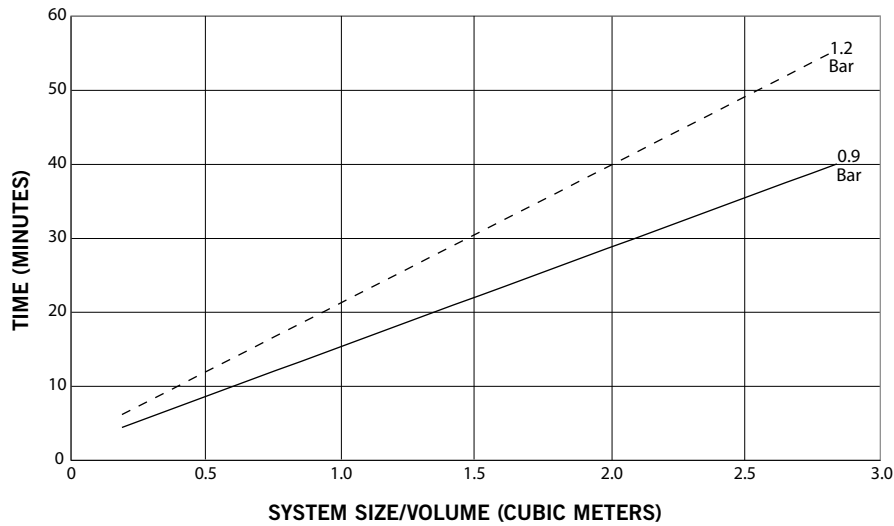
SERIES 7C7

PERFORMANCE

ESTIMATED TIME TO REACH VARIOUS PRESSURES - EUROPEAN OPTION
SERIES 7C7 WITH 1/3-HP (220-240 VAC, 50 HZ) COMPRESSOR



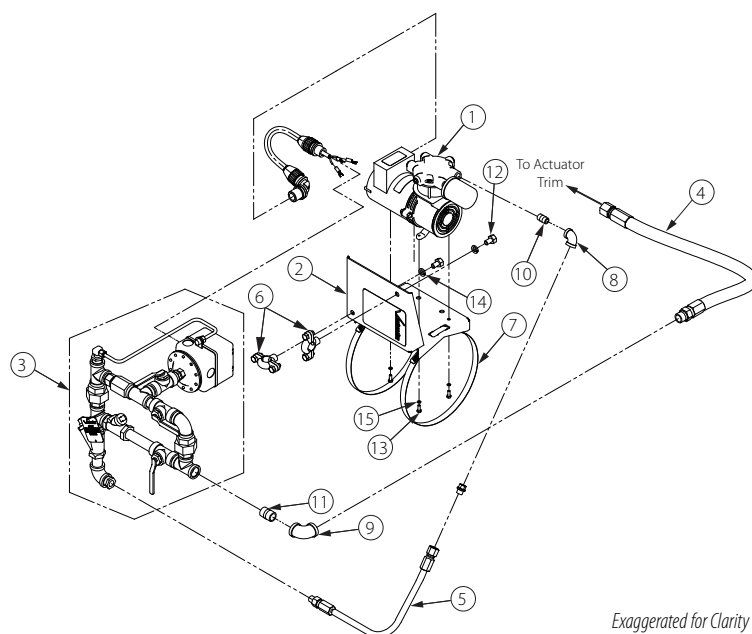
ESTIMATED TIME TO REACH VARIOUS PRESSURES -
SERIES 7C7 WITH 1/3-HP (220-240 VAC, 60 HZ) COMPRESSOR



Series 7C7 Compressor Package

SERIES 7C7

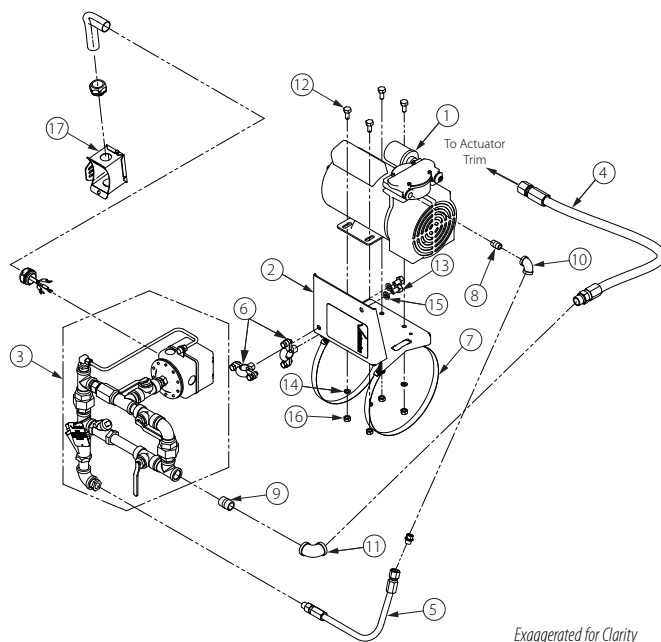
EXPLODED VIEW DRAWING - SERIES 7C7 AIR MAINTENANCE COMPRESSOR ASSEMBLY WITH 1/6-HP COMPRESSOR



Bill of Materials

Item	Qty.	Description
1	1	Compressor
2	1	Mounting Bracket
3	1	Series 757P Air Maintenance Trim Assembly with Pressure Switch
4	1	Stainless Steel Braided Flex Hose (1/2-inch NPT Male x Female)
5	1	Stainless Steel Braided Flex Hose (1/4-inch NPT Male x Female)
6	2	Split Hanger for 1/2-inch Pipe
7	2	Hose Clamp
8	1	90° Female Elbow (1/4-inch NPT)
9	1	90° Female Elbow (1/2-inch NPT)
10	1	Close Nipple (1/4-inch NPT)
11	1	Close Nipple (1/2-inch NPT)
12	2	Hex-Head Bolt (3/8 - 16 x 3/8-inch Long)
13	3	Hex-Head Bolt (#10 - 32 x 1/2-inch Long)
14	2	Lock Washer (3/8 inch)
15	3	Lock Washer (#10)

EXPLODED VIEW DRAWING - SERIES 7C7 AIR MAINTENANCE COMPRESSOR ASSEMBLY WITH 1/3-HP COMPRESSOR



Bill of Materials

Item	Qty.	Description
1	1	Compressor
2	1	Mounting Bracket
3	1	Series 757P Air Maintenance Trim Assembly with Pressure Switch
4	1	Stainless Steel Braided Flex Hose (1/2-inch NPT Male x Female)
5	1	Stainless Steel Braided Flex Hose (1/4-inch NPT Male x Female)
6	2	Split Hanger for 1/2-inch Pipe
7	2	Hose Clamp
8	1	Close Nipple (1/4-inch NPT)
9	1	Close Nipple (1/2-inch NPT)
10	1	90° Female Elbow (1/4-inch NPT)
11	1	90° Female Elbow (1/2-inch NPT)
12	4	Hex-Head Bolt (3/8 - 18 x 3/4-inch Long)
13	2	Hex-Head Bolt (3/8 - 16 x 3/8-inch Long)
14	4	Lock Washer (3/8 inch)
15	2	Lock Washer (3/8 inch)
16	4	Hex Nut (3/8 - 18)
17	1	Conduit Box

Series 7C7 Compressor Package

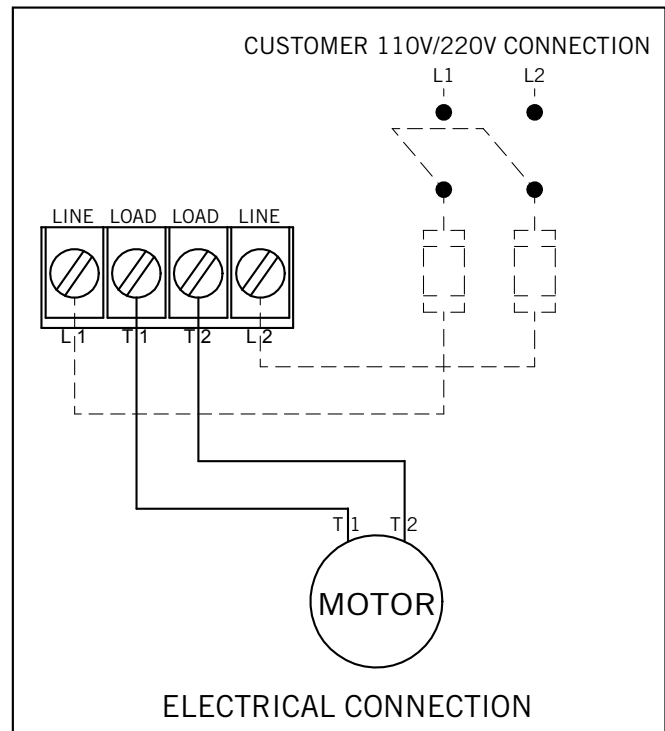
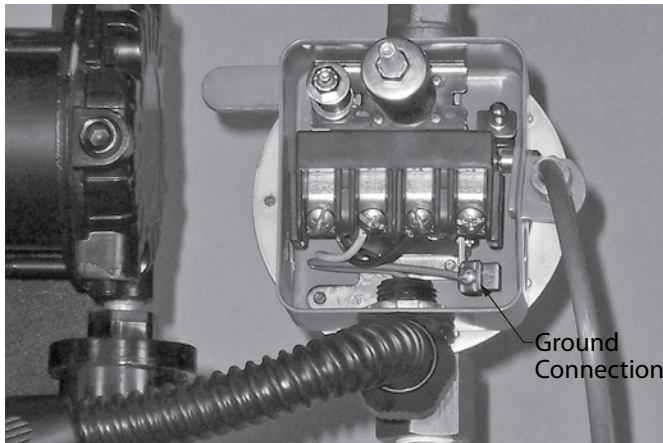
SERIES 7C7

ELECTRICAL INFORMATION

DANGER



- Only qualified electricians should connect incoming power to the Series 7C7 Air Maintenance/Compressor Assembly.
 - To reduce the risk of electric shock, check the electrical source for proper grounding.
- Failure to follow these instructions could result in death or serious personal injury.



NOTE: NEMA 1 Enclosure - intended only for indoor use.
Only qualified electricians should make the electrical connection in accordance with requirements of the local authority having jurisdiction and any applicable electrical codes.

WARRANTY

Refer to the Warranty section of the current Price List or contact Victaulic for details.

NOTE

This product shall be manufactured by Victaulic or to Victaulic specifications. All products to be installed in accordance with current Victaulic installation/assembly instructions. Victaulic reserves the right to change product specifications, designs and standard equipment without notice and without incurring obligations.

WARNING



WARNING

- This product must be installed by an experienced, trained installer, in accordance with the instructions provided with each valve. These instructions contain important information.
- Failure to follow these instructions may result in serious personal injury, property damage, or valve leakage.
- If you need additional copies of this product literature or the valve installation instructions, or if you have any questions about the safe installation and use of this device, contact Victaulic Company, P.O. Box 31, Easton, PA 18044-0031 USA, Telephone: 001-610-559-3300.



For complete contact information, visit www.victaulic.com

30.22 4847 REV D UPDATED 4/2008

VICTAULIC IS A REGISTERED TRADEMARK OF VICTAULIC COMPANY. © 2008 VICTAULIC COMPANY. ALL RIGHTS RESERVED.

30.22

