

Styles 2937, 2938 & 2939

Aquamine® Formed Outlet Coupling

PRODUCT DESCRIPTION

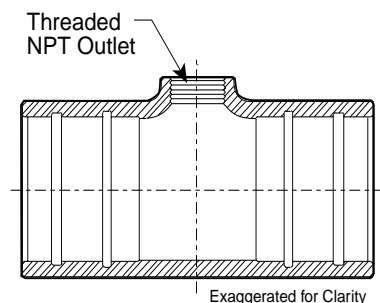


Patent Pending

The new Aquamine® outlet couplings are designed to serve as a coupling while offering a deep tapped outlet in common sizes. This patent-pending process and design allows for an increased threaded socket length, offering more exposed threads than those found in other available products. This feature will provide a higher working pressure rating than those outlets that provide a minimal amount of exposed threads, and will eliminate leaks at the outlet joints.

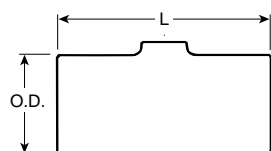
Outlet couplings are rated to 250 psi working pressure, or the working pressure of the pipe, whichever is lower.

FEATURES AND BENEFITS



- Couples pipe together and provides an outlet
- Retains full system pressure
- Full continuous threads
- Positive shut-off and sealing
- Increased threaded socket length

DIMENSIONS



SIZE Nominal Inches Actual mm	Length "L" Inches mm	Outside Diameter Inches mm	Maximum Working Pressure PSI/kPa		
			Style 2937 1" NPT Tap	Style 2938 1½" NPT Tap	Style 2939 2" NPT Tap
2 60,3	7.50 191	3.20 81	250 1725	— —	— —
3 88,9	11.00 279	4.38 111	250 1725	250 1725	— —
4 114,3	12.00 305	5.47 139	250 1725	250 1725	250 1725
6 168,3	12.00 305	7.84 199	250 1725	250 1725	250 1725

NOTE: The pressure ratings noted above are based upon the capability of the female threaded socket. If a plastic threaded pipe nipple is used, the rating will be based upon values cited in ASTM-D1785 for Schedule 80 threaded pipe nipples.

This product shall be manufactured by Victaulic Company. All products shall be installed in accordance with current Victaulic installation/assembly instructions. Victaulic reserves the right to change product specifications, designs and standard equipment without notice and without incurring obligations.