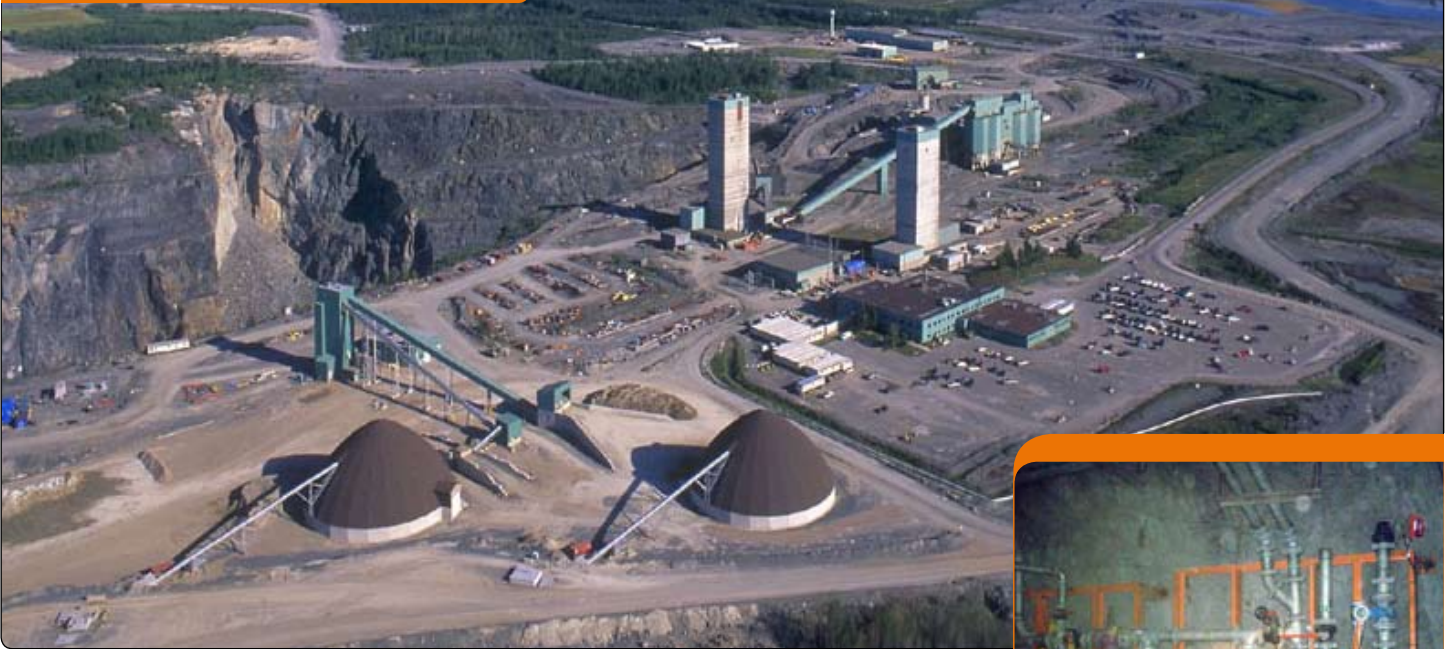


## project brief

### TYPE OF FACILITY:

Mine



## Kidd Creek Mine

■ Timmins, Ontario, Canada

Kidd Creek Mine is a leading producer of copper, zinc, and other base metals since 1966. With a current depth of 9,100ft/2,774m a solution was required to ensure underground process water is distributed throughout the mine at reasonable working pressures.

To meet this need, 12 Victaulic Pressure Reducing Valve (PRV) assemblies were installed complete with strainers and 4"/100mm Style 726 ball valves to isolate and protect the systems. The units were prefabricated off-site to allow for fast on-site installation. The couplings and fittings were galvanized to ensure against corrosion. In addition to the PRV assemblies, Kidd Creek has utilized Victaulic products on multiple systems over the years for their ease and speed of installation and their ability to minimize downtime during scheduled maintenance.



### MARKET:

Mining

### VICTAULIC SOLUTIONS:

Speed of installation  
Ease of installation

### OWNER:

Xstrata Copper

### CONTRACTOR:

Cain Safety

### ENGINEER/CONSULTANT:

Wardrop Engineering

### COMPLETED DATE:

2008

### SPECIFICATIONS:

SERVICES:	PIPE MATERIALS:	PIPE SIZE RANGE:
Underground Process Water	Sched 40 Galvanized Carbon Steel	2 – 4"/50 – 100 mm