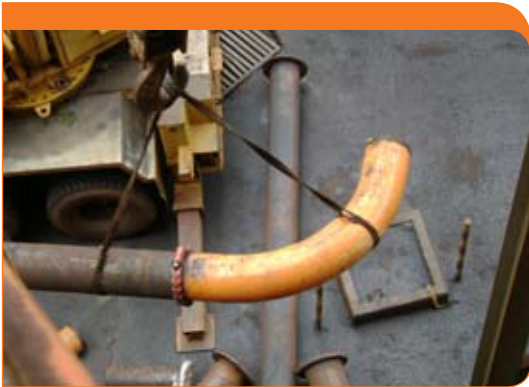


project brief

TYPE OF FACILITY:

Mine



Timbopeba

■ Mariana, MG - Brazil

Timbopeba, an iron ore mine in Mariana, MG- Brazil, recently installed Victaulic grooved piping components on the iron ore feed lines. Originally, the plan for the piping system called for all rubber elbows, but after learning that Victaulic could supply rubber-lined long radius 3D carbon steel elbows to improve system durability, Vale, the owner, agreed to install the Victaulic product, making it Vale's first Victaulic installation.

The Victaulic rubber-lined elbows were installed with Style 77 flexible couplings, not only improving the durability of the system, but providing flexibility at every joint. The easy installation of the mechanical grooved joint eliminated the need for hot works and maximized productivity, saving the owner considerable amounts in labor costs. In addition, the Victaulic grooved components reduced the amount of downtime required for all future maintenance. Since grooved couplings provide a union at every joint future additions and maintenance can be started anywhere a Victaulic coupling is found.

SPECIFICATIONS:

SERVICES:

Iron ore

PIPE MATERIALS:

Grooved Carbon Steel

PIPE SIZE RANGE:

10 – 12"/250 – 200 mm

MARKET:

Mining

VICTAULIC SOLUTIONS:

Compatible with Lined Fittings

Ease and Speed of Installation

Ease of Maintenance

Flexibility

Reliability

OWNER:

Vale

CONTRACTOR:

Vale

ENGINEER/CONSULTANT:

Alvenius Equipamentos Tubulares Ltda.

COMPLETED DATE:

2008



WCAS-7GZMEW